



Dosing Ball Valve ProfiDos 101

safefloat ball, radial mounting and removal
one-piece, compact

Application

- chemical plants
- water treatment

Utilisation

- for exact dosing of fluids

Dosing range

- 0° up to 180°
- scale 5° steps

Type of fluids

- Neutral, aggressive liquids without abrasive particles provided that the components getting in contact with the fluid are resistant at operating pressure according to the ASV resistance guide.

Examinations

- Requirements and examinations acc. to DIN 3441, 3442, 8063; DIN EN 12266, leak rate A examined.

Nominal pressure (H₂O, 20 °C)

- PVC-U: PN 16
- PP: PN 10

Media temperature

- see pressure/temperature diagram

Operating pressure

- see pressure/temperature diagram

Size

- DN 15 - DN 32

Body, ball, stem

- PVC-U or PP

Ball seat

- PTFE

Sealings

- EPDM or FPM

Actuation

- manual with T-handle, also as position indicator
- with electric or pneumatic actuator acc. to DIN/ISO 5211 on request

Connection

- union DIN 8063 with socket ends for solvent welding DIN/ISO (PVC-U)
- union DIN 8063 with socket ends for fusion welding DIN/ISO (PP)
- inserts acc. to BS, ANSI or JIS on request

Mounting

- variable

Flow direction

- direction of flow always in direction of arrow

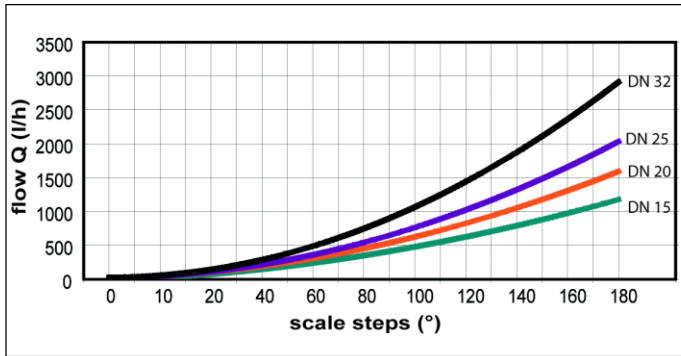
Option

- bracket

Colour

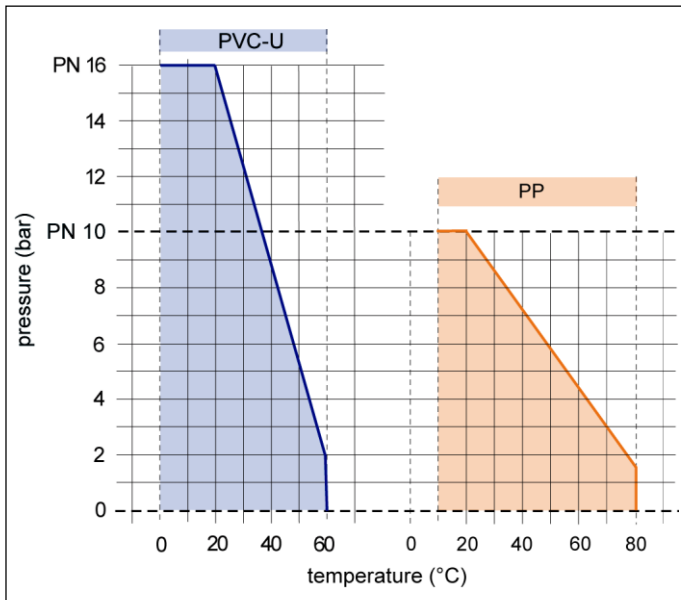
- body
PVC-U: grey, RAL 7011
PP: grey, RAL 7032
- T-handle orange, RAL 2004

Flow Q at Δp 1 bar



The diagram shows the flow Q at a pressure difference of Δp 1 bar.

Pressure/temperature diagram



The pressure/temperature limits are applicable for a computed operating life factor of 25 years at PN 10 (PP) and PN 16 (PVC-U).

The values are a guide for harmless fluids (DIN 2403) the material of the valve is resistant against.

For other media see the ASV resistance guide.

Durability of wear and tear parts is depending on the operating conditions of the application.

Values below 0 °C (PP < +10 °C) on request with exact data of operation.

Torque Nm (standard value)

d (mm)	20	25	32	40
PVC-U	2,5	3,6	4,5	6,2
PP	2,0	3,0	4,0	5,8

The stated torques are approximate values.

They have been determined as follows.

Operating pressure $p = 10,0$ bar (PP) and $p = 16$ bar (PVC-U) with H₂O, 20 °C.

Depending on the fluid the respective value can be higher or lower.

*DVS = German Association for Welding Technology

Attention Operating instructions

Safe operation of the valve can only be ensured if it is properly installed, operated, serviced or repaired by qualified personnel according to its intended use while observing the accident prevention regulations, safety regulations, relevant standards and technical regulations or data sheets like DIN, DIN EN, DIN ISO and DVS* for example.

The intended use includes adhering to the specified limit values for pressure and temperature as well as the check of the chemical resistance.

For this purpose, ensure that all components getting in contact with the media are "**resistant**" in accordance with the ASV resistance guide.

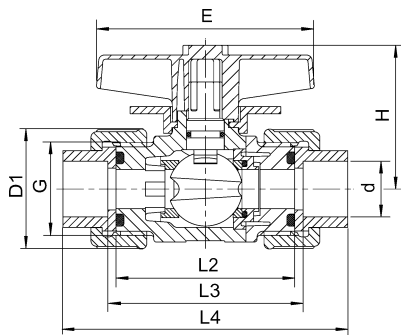
The owner/user must inform the authorized qualified personnel instructed to perform the assembly, inspection and/or maintenance work of any potential danger emanating from the machine line/medium, and ensure that suitable safety measures are observed. This includes also the consideration of local regulations and laws of the territories of use.

The connection of electric or pneumatic actuators and/or accessories to the power/compressed air supply requires special knowledge. Ensure that this work is performed only by authorized qualified personnel according to the operating instruction of the manufacturer.

If the authorized qualified personnel does not have any operating and maintenance instruction this is to be requested prior installation, maintenance or repair.

Non-observance of the specified information and safety instructions may lead to injuries and/or property damages.

Ball Valve ProfiDos 101 - manual



dimensions	d (mm)	20	25	32	40
	DN (mm)	15	20	25	32
	DN (inch)	1/2	3/4	1	1 1/4
PVC-U	PN (bar)	16	16	16	16
PP	PN (bar)	10	10	10	10
PVC-U	D1	41,0	51,0	58,0	72,0
PP	D1	46,0	56,0	66,0	79,0
	E	78,0	88,0	98,0	108,0
	G	1"	1 1/4"	1 1/2"	2"
	H	52,0	62,0	71,0	82,0
PVC-U	L2	64,0	76,0	81,0	92,0
PP	L2	63,0	75,0	79,0	91,0
PVC-U	L3	70,0	82,0	87,0	98,0
PP	L3	70,0	82,0	85,0	97,0
PVC-U	L4	102,0	120,0	131,0	150,0
PP	L4	98,0	113,0	121,0	138,0
weight (kg)					
socket	PVC-U	0,16	0,27	0,38	0,68
socket	PP	0,13	0,20	0,29	0,47

Article number

body PVC-U	d (mm)	20	25	32	40
connection sealing					
PVC-U socket	PTFE-EPDM	132661	132662	132663	132664
PVC-U socket	PTFE-FPM	132673	132674	132675	132676
body PP					
body PP	d (mm)	20	25	32	40
connection sealing					
PP socket	PTFE-EPDM	132667	132668	132669	132670
PP socket	PTFE-FPM	132679	132680	132681	132682

